

**PENQUIS DISTRICT:**

**Substance Abuse**

**Substance Use Consequences**

*Information below is compiled from admission and discharge data collected from public agencies receiving funds from the Office of Substance Abuse. It represents clients who enter treatment as a result of an OUI, and/or are Medicaid eligible, and/or are in methadone programs.*

Admissions for treatment remained relatively consistent over the past three years, yet Maine has been identified by the National Survey on Drug Use and Health as having one of the highest unmet drug treatment needs for adolescents in the county.

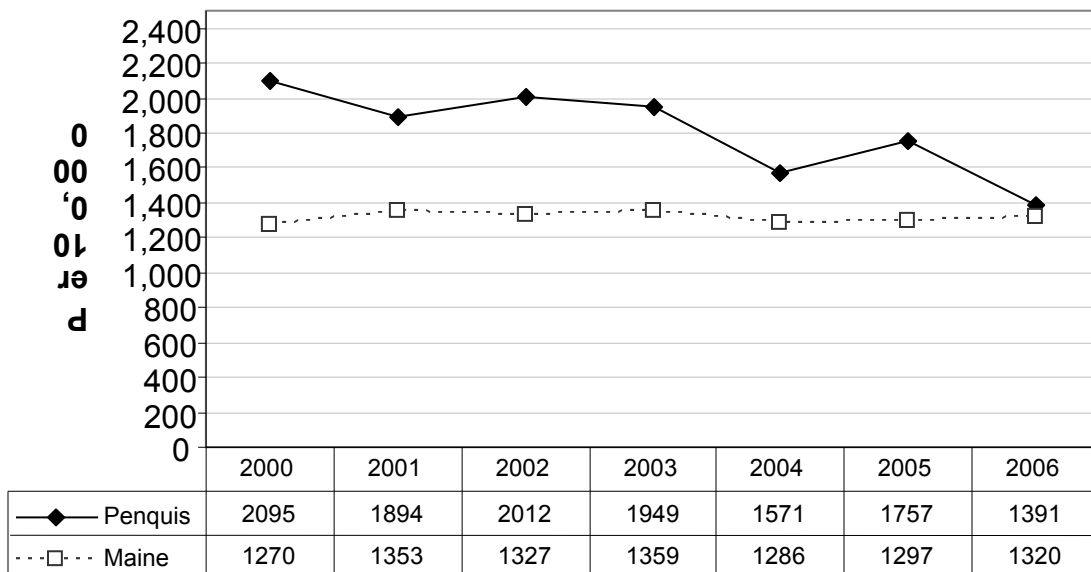
This data is used to monitor and track trends in substance use for new or changing trends and used for needs assessment planning and workforce development.

The Office of Substance Abuse is working across systems to provide a comprehensive, integrated approach to treatment services. To find out more about the Treatment Data System: [www.maine.gov/dhhs/osa/data/tds/index.htm](http://www.maine.gov/dhhs/osa/data/tds/index.htm)

**Substance abuse\* admissions (all ages)**

\*Substance abuse treatment includes all admissions for those whose lives are directly impacted by the use and abuse of alcohol and other drugs.

**Substance abuse admissions (all ages) per 100,000:  
Penquis District and Maine State, 2000-2006**

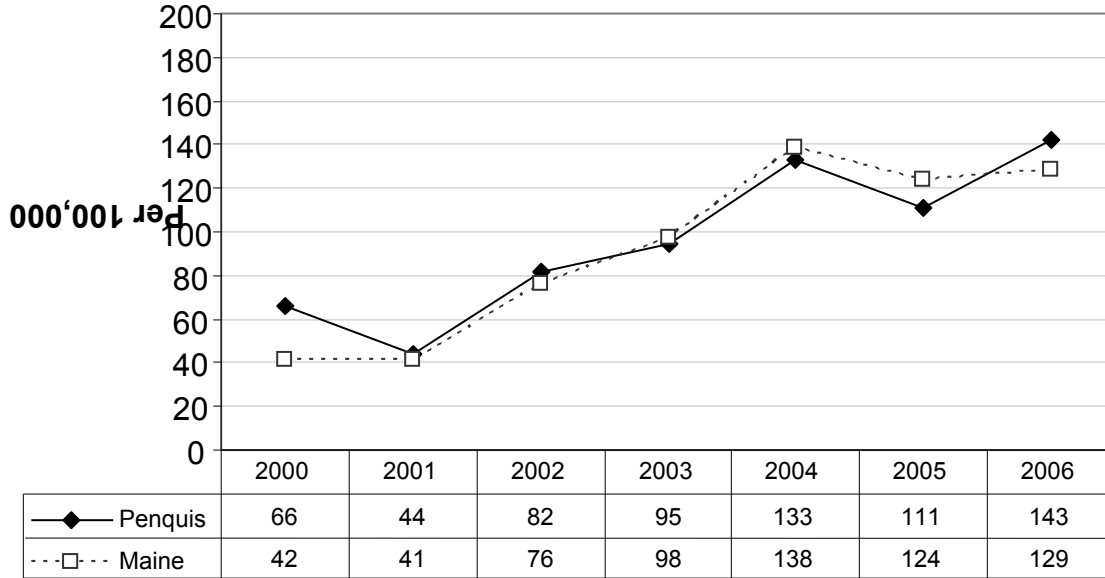


Source: Treatment Data System (TDS), 2000-2006 and U.S. Census Bureau.

**Evaluation Only\* Admissions (all ages)**

\*Evaluation only clients are those who are referred to substance abuse services for the purpose of determining their need for treatment. Referrals originate from, but are not exclusive to, the Driver Education and Evaluation Program (DEEP), child welfare services, and probation.

**Evaluation only admissions (all ages) per 100,000:  
Penquis District and Maine State, 2000-2006**



Source: Treatment Data System (TDS), 2000-2006 and U.S. Census Bureau.